



Available SF 43,202 SF Industrial For Lease Building Size 43,202 SF



Address: 2300 E 52nd St, Vernon, CA 90058
Cross Streets: S Santa Fe Ave/E 52nd St

Fabulous Free Standing CTU Industrial Facility
2 Truck High & 3 Ground Level Loading Positions
24' Clear Height
Heavy Power (3000 amps), 2400 Discharge Credits
Excellent West Vernon Location

Table with 4 columns: Lease Rate/Mo, Lease Rate/SF, Lease Type, Available SF, Minimum SF, Prop Lot Size, Term, Sale Price, Sale Price/SF, Taxes, Yard, Zoning, Sprinklered, Clear Height, GL Doors/Dim, DH Doors/Dim, A: 3000 V: 480/277 O: 3 W: 4, Construction Type, Const Status/Year Blt, Whse HVAC, Parking Spaces, Rail Service, Specific Use, Office SF / #, Restrooms, Office HVAC, Finished Ofc Mezz, Include In Available, Unfinished Mezz, Include In Available, Possession, Vacant, To Show, Market/Submarket, APN#.

Listing Company: Sterling Industrial Prop.
Agents: Brad Harris 213-448-3313
Listing #: 24514346 Listing Date: 04/20/2020 FTCF: CB250N000S000/A0AA
Notes: Lessee must independently verify all information herein. Contact broker to show 213-448-3313 bharris@sterling-props.com



Brad Harris
bharris@sterling-props.com
213-448-3313



2300 E. 52nd St., Vernon, CA 90058



Industrial Properties

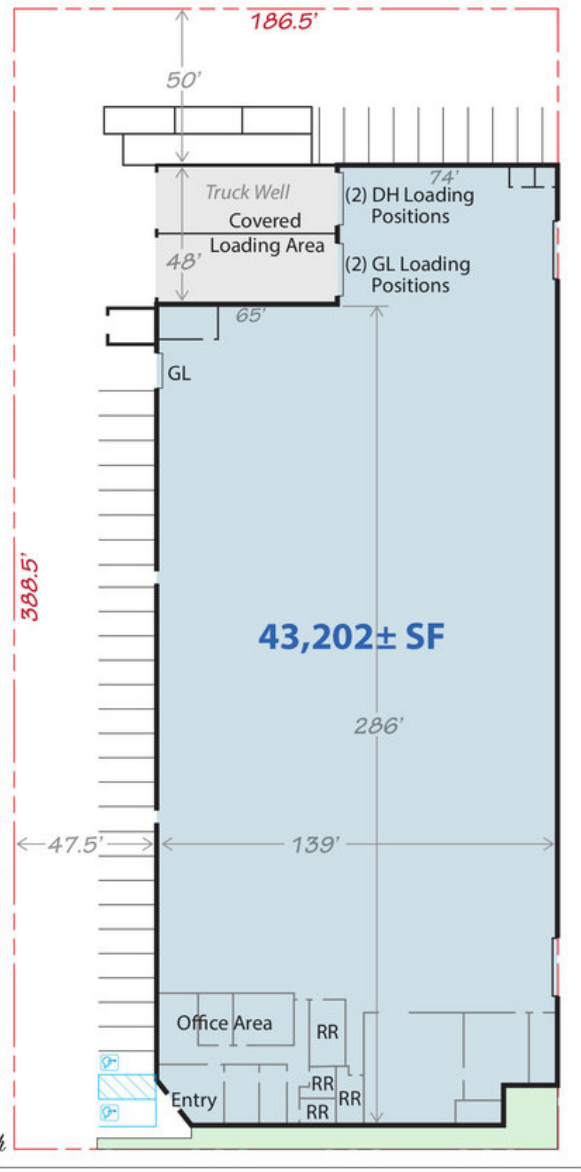
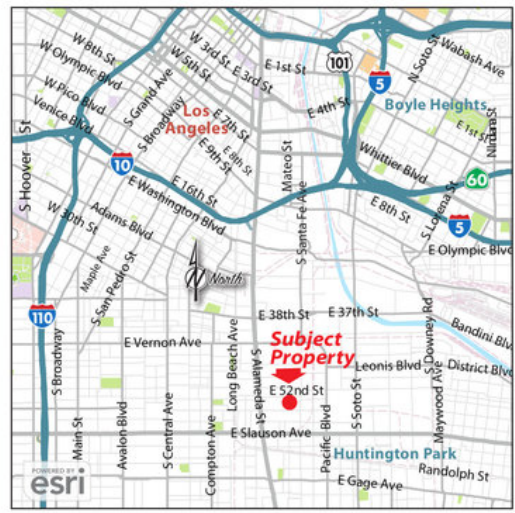
Contact Exclusive Agents:

Brad S. Harris

bharris@sterling-props.com

213-483-3601

1625 W. Olympic Blvd.
Suite 735
Los Angeles, CA 90015



E. 52nd Street

The information contained herein is from sources we believe to be reliable but, we do not guarantee its accuracy. All measurements & dimensions are approximations and are not to scale. Clients are encouraged to verify their accuracy.